



# GAT MONTHLY MEMBERSHIP PROGRESS REPORT

Results as of: 3/31/2023

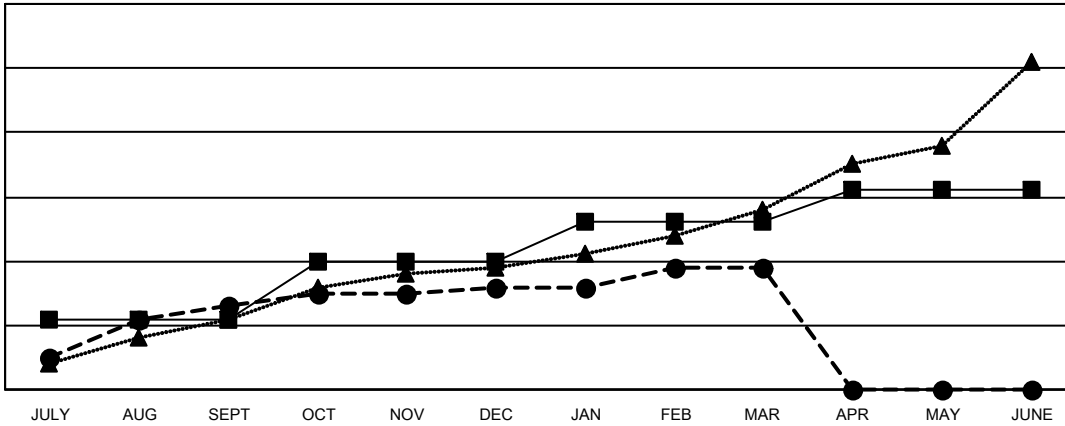
Multiple District 3234

LOCATION: INDIA

Clubs			
RESULTS FOR 2022-2023			
QUARTER	NEW CLUB GOAL	NEW CLUBS	DROPPED CLUBS
JULY/AUG/SEPT	11	13	2
OCT/NOV/DEC	9	3	241
JAN/FEB/MAR	6	3	2
APR/MAY/JUNE	5	0	0

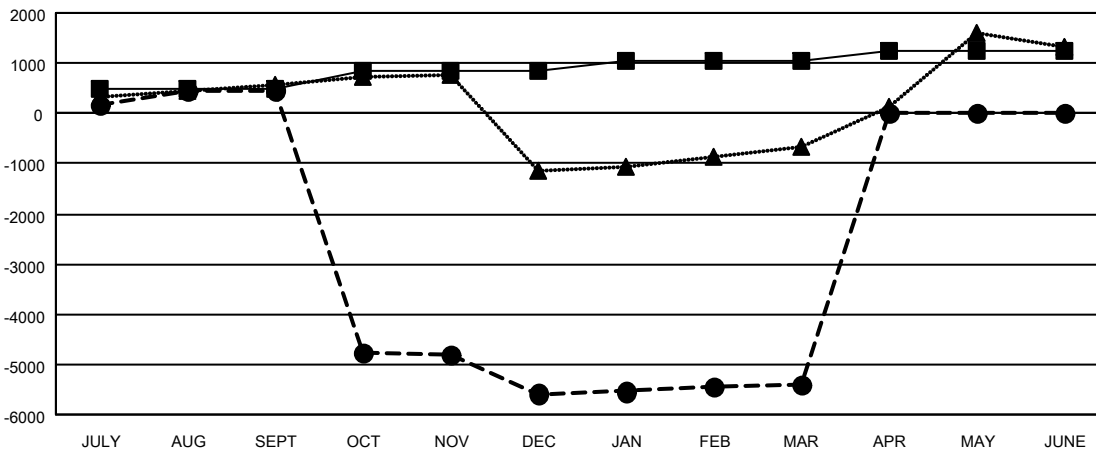
Members			
RESULTS FOR 2022-2023			
QUARTER	MEMBER GROWTH NET GOAL	MEMBER GROWTH ACTUAL	DROPPED MEMBERS ACTUAL (including transfers)
JULY/AUG/SEPT	490	1,033	457
OCT/NOV/DEC	355	299	6,337
JAN/FEB/MAR	190	538	205
APR/MAY/JUNE	200	0	0

GOALS AND ACTUAL NEW CLUBS CUMULATIVE



- CURRENT YEAR GOALS FOR NEW CLUBS
- CURRENT YEAR ACTUAL NEW CLUBS
- ▲- LAST YEAR ACTUAL NEW CLUBS

GOALS AND ACTUAL MEMBERS CUMULATIVE



- MEMBER GROWTH NET GOAL
- MEMBER GROWTH ACTUAL
- ▲- LAST YEAR MEMBERSHIP ACTUAL

<b>DROPPED CLUBS: 245</b>	<b>196 CLUBS OF 652 ADDED 1 OR MORE NEW MEMBERS</b>	<b>GENDER DISTRIBUTION</b>
<b>DROPPED MEMBERS</b>	<a href="#">CLICK HERE FOR CUMULATIVE MEMBERSHIP DATA</a>	MALE 11,033 (62.87%)
DECEASED 28		FEMALE 6,515 (37.12%)
CLUB CANCELLED 5,822		NON BINARY 0 (0.00%)
OTHER 1,148		PREFER NOT TO ANSWER 1 (0.01%)
<b>TOTAL 6,998</b>		<b>TOTAL FAMILY UNIT MEMBERS 11,474</b>
		<b>FAMILY MEMBERS PAYING HALF DUES 6,607</b>